

916-652-7424 / Fax 916-647-0477

3495 Swetzer Rd Loomis, Ca. 95650

14 Wide Series Gable Interior Retrofit (Use VM1424) Installation Instructions.

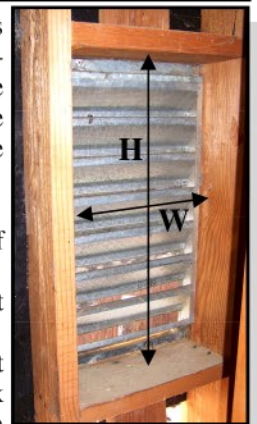
This kit includes the following:

- 1) One 14" x 24" Piece of treated honeycomb
- 2) One 14" x 24" Mesh

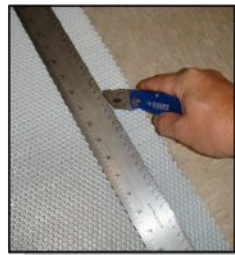
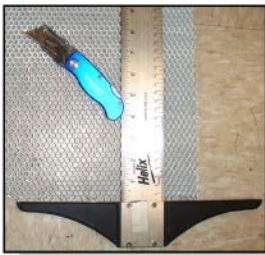
You will need the following tools & supplies:

- Large tin snips
- Razor knife & straight edge (optional)
- Screw gun w/ tip for your screw type
- Flashlight or battery type lantern
- 10) 1" to 1.5" Sheet metal screws with washers
- *Or wood screws if gable vent is made of wood.

CAUTION: Remember to use extreme caution during the installation of this project. If access is from the roof: steep pitch roofs, high eaves, slippery conditions, and poor weather can contribute to a high risk of injury. Maintain safe working practices at all times. This work will be performed from inside the attic. Access to the gable vents may require passing an obstacle course of trusses, false walls, heating units, wiring and plumbing. Never step directly onto the insulation or sheetrock and be wary of high temperatures.



- 1) **Clean the work area:** Remove debris and clean dust, cobwebs, and leaves from backside of gable vent.
- 2) **Measure the height and width:** The width is generally 14" plus or minus and the height varies.
- 3) **Cut the honeycomb and mesh:** The easiest way to cut the honeycomb matrix is to lay it onto a flat surface, measure it and use a straight edge and a razor knife to score it. Then break away the excess honeycomb by bending it away at a 90 deg angle. Alternately, you can use a large pair of snips to cut the honeycomb. In the attic, there is generally no flat surface to work with, so this alternate method is easier, just make sure you cut a straight line so the end result is a good fit over the gable vent. The mesh may be cut with a pair of snips, to the same dimensions.



- 4) **Attach the fire-safe material:** Most gable vents have an existing 1/4" screen over the inside. Leave this screen in place. Starting with the honeycomb, then the mesh, place the sized pieces over the inside of the gable vent. Center the material in such a way as to cover any clear passage to the exterior. If it is daylight outside, this step is easier to see. Place a screw with washer at the top center of the mesh & honeycomb. Make sure the screw is over a solid part of the gable vent, so the screw will anchor properly. Tighten the screw until it grabs securely and tighten just enough to firmly hold the fire-safe materials. **DO NOT OVER TIGHTEN.** Over tightening will crush the honeycomb and can tear the mesh. Continue to place the screws with washers around the perimeter of the material fastening both securely onto the vent



When completed, the retrofit will not be noticeable from the outside, but your gable vent will now be fire and ember safe.

***Remember** when painting or staining the exterior to mask off the face of the vent to prevent excess spray from sticking to the mesh.

